

National University Corporation

NAGOYA INSTITUTE OF TECHNOLOGY

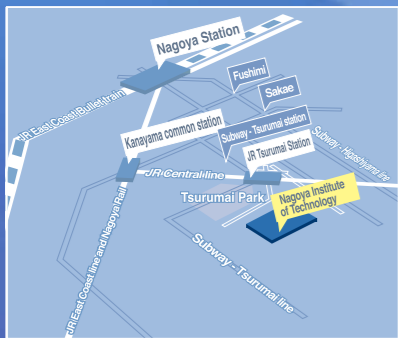


Nagoya Institute of Technology NIT International Center

Gokiso-cho, Showa-ku, Nagoya, Aichi, JAPAN
ZIP - 466-8555

<http://www.nitech.ac.jp>

E-mail : international@adm.nitech.ac.jp



Access to NIT Campus

Means of Transportation

J R	Nagoya	Chuo Line	Tsurumai		
Subway	Nagoya	Higashiyama Line	Fushimi	Tsurumai Line	Tsurumai
Air route	Centrair	Meitetsu Tokoname Line	Kanayama	JR Chuo Line	Tsurumai

ひとづくり、ものづくり、未来づくり

Education, Innovation and Contribution

Admission Policy

Nagoya Institute of Technology (NIT) adheres to three principles, including (1) Education, (2) Innovation in science and technology, and (3) Contribution to the future. NIT has carried a proud 100-year tradition to see the growth. Also, NIT is dedicated to supporting its future endeavors in order to bring up engineers and researchers with global awareness and ethics in engineering. To achieve these goals, we seek the students who have:

1. mastered the fundamental knowledge which enables him/her to combine academic study in a wide range of engineering areas,
2. the ability to work wisely, creatively, and effectively for the advancement of technology, and
3. the passion to preserve the global environment, and to contribute to human happiness and the welfare of international society.



Nagoya Institute of Technology

Faculty of Engineering

- Department of Life and Materials Engineering
- Department of Environmental and Materials Engineering
- Department of Mechanical Engineering
- Department of Electrical and Electronic Engineering
- Department of Computer Science
- Department of Architecture and Design
- Department of Civil Engineering and Systems Management

Graduate school

- Department of Materials Science and Engineering
- Department of Engineering Physics, Electronics and Mechanics
- Department of Computer Science and Engineering
- Department of Architecture, Civil Engineering and Industrial Management Engineering
- Department of Techno-Business Administration
- Department of Frontier Materials
- Department of Scientific and Engineering Simulation

Curriculum Information

Common education for rich sensibility and promotion of correct ethical outlook

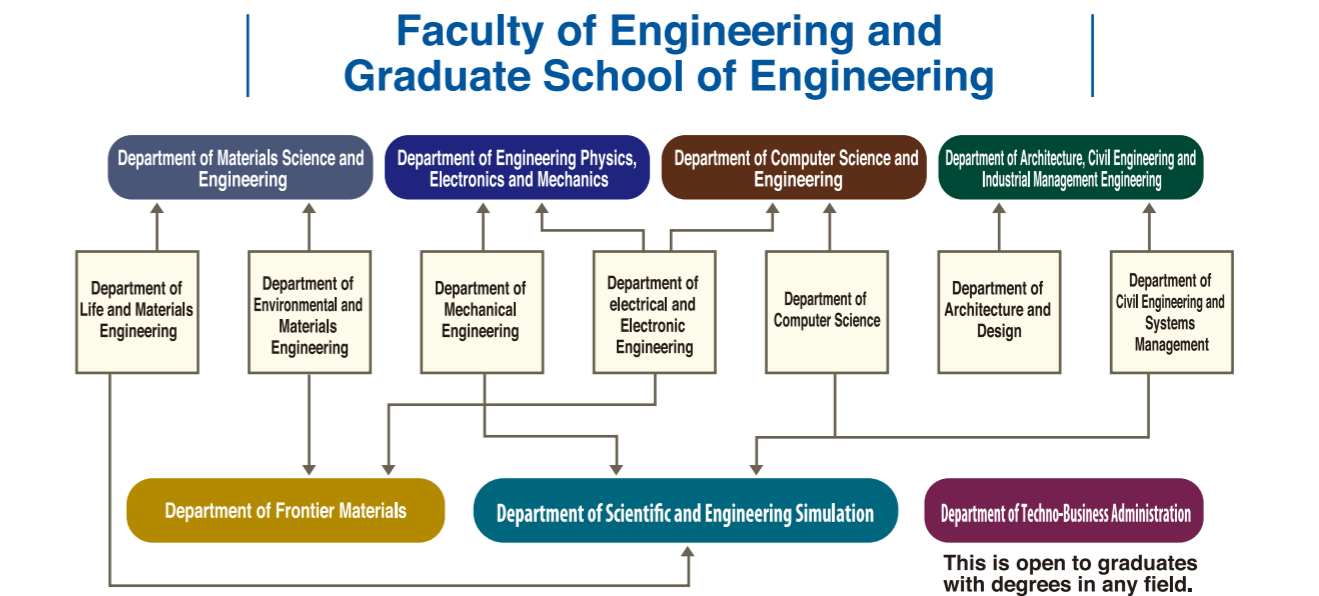
NIT foundation curriculum consists of two parts: general education courses and the departmental program of the courses in which the degree is to be awarded. The general education courses cover courses in the fundamentals of science, engineering, and business, along with liberal arts. The general education courses are addressed for main three purposes.

First, students achieve an understanding of roles of engineering in society; secondly, students nurture a notion of how their specialized knowledge can be placed within natural science. Moreover, students develop an ability to contribute knowledge to human happiness and the welfare of international society which is one of NIT missions above.

In the first year of NIT, students study basic required courses component of general education to help to ensure a rewarding experience that positions students for further academic success.

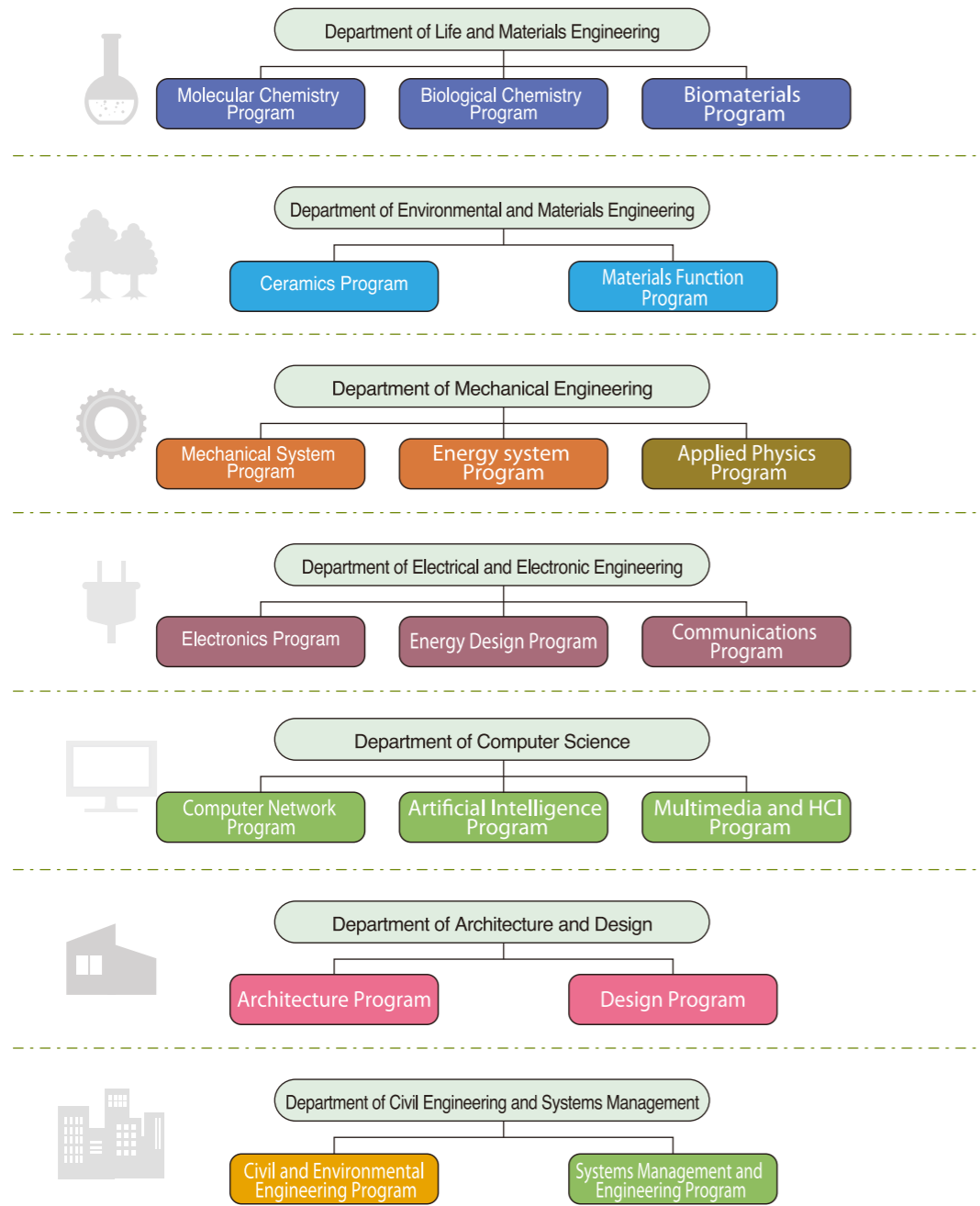
From the second year, students are enrolled in elective course system to study major degree programs. In the third & fourth years, students are requested to take courses in the fundamentals of business to learn cost-effective management knowledge and skills.

In the fourth year, students participate in their research project to give them proficiency in the topics surrounding a certain project. Students are encouraged to seek a faculty member to supervise research. Some departments offer educational flexibility for students who wish to target specific disciplines. Students can participate in research activities in other disciplines that complement their individual interests under some limitations.



Contents	02	03	04	05	12	13	20	22	23	24	26	27
Admission Policy												
Academic Calendar 2010-2011												
Departments and Programs												
Faculty of Engineering												
Courses after Undergraduate Degree Completion												
Graduate School of Engineering												
Campus Information												
International Student population												
Messages from Seniors												
Entrance Examinations and Scholarships												
Nagoya, Japan												
Surrounding Area of Nagoya Institute of Technology												

Departments and Programs



Categorization of Programs

Rooted in the concepts:

- Chemistry
- Physics (Mechanics and Heat)
- Architecture and Design
- Chemistry and Physics
- Physics (Atom and Atomic nucleus)
- Mathematics and Computer science
- Physics (Electricity and Magnetism)
- Physics (Mechanics)

High school curriculum for science and mathematics serves as a guide to categorize programs offered by each department. Concepts of humanities course are integrated into some of engineering fields. A good example is 'Systems Management and Engineering Program' offered by the Department of Civil Engineering and Systems Management; this program combines the domains of natural science and social sciences. As another example, 'Design Program' provided by the Department of Architecture and Design is related to culture's effects.

Department of Life and Materials Engineering

[Home page URL] <http://www.lme.nitech.ac.jp/>

The Department aims to bring up specialists in chemistry and biochemistry who will enrich the earth.

The Department's feature is to seek chemical knowledge to understand the nature of various phenomena at the molecular level. From the molecular-level viewpoint, students are involved in some aspects of studies, including study of the development of environmentally-friendly process that is used to form a new substance, elucidation of life function of bio-materials such as enzyme, study of structure-function relationships in various bio-materials such as proteins and nucleic acids etc, and these findings into application for the development of new substances. In addition, study of environmental science (e.g., biodegradable plastic and microbial bioremediation technology) is encompassed.

[Types of jobs]

Bio-materials, pharmaceutical drugs development engineer
Pharmaceutical drugs, medical materials design

Chemical engineer

Industrial materials, petrochemicals production

Your future image



[Types of industries]

Daily life product development scientist
Clothes, food, shelter items production

Artificial organs, contact lenses, surgical equipment, pharmaceutical industry

Plastic materials, petrochemicals industry

Automotive materials development engineer
Automotive materials manufacturing

Process design engineer

Chemical process equipment Designing



Textiles, household utensils, paint, camera industry and related industry, electronics industry



Automobiles, parts, tire industry



Plant construction, chemical, petro industry

Advantages of Getting Your Study in the Department of Life and Materials Engineering

The Department revolves around a peculiar concept in order to bring up experts who will have competent knowledge of not only materials but also life function and bio-materials. From this perspective, the Department consists of three programs: Molecular Chemistry, Biological Chemistry, and Biomaterials.

The Department of Life and Materials Engineering offers the following programs.

Molecular Chemistry Program

Students are expected to gain greater and deeper understanding of science and to seek functional materials for useful life.

- Clean chemistry
- Nano technology
- Energy conversion



Biological Chemistry Program

Chemistry is the molecular science. Students are expected to learn life function for a better world, by linking chemistry with biology.

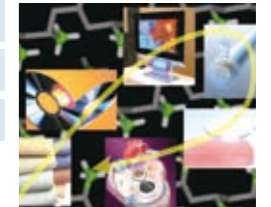
- Life function elucidation
- Bio-materials
- Biochip



Biomaterials Program

Chemistry is the molecular science. Students are expected to study materials that support various functions of living bodies.

- Life function support
- Bio-compatibility
- Biosensor



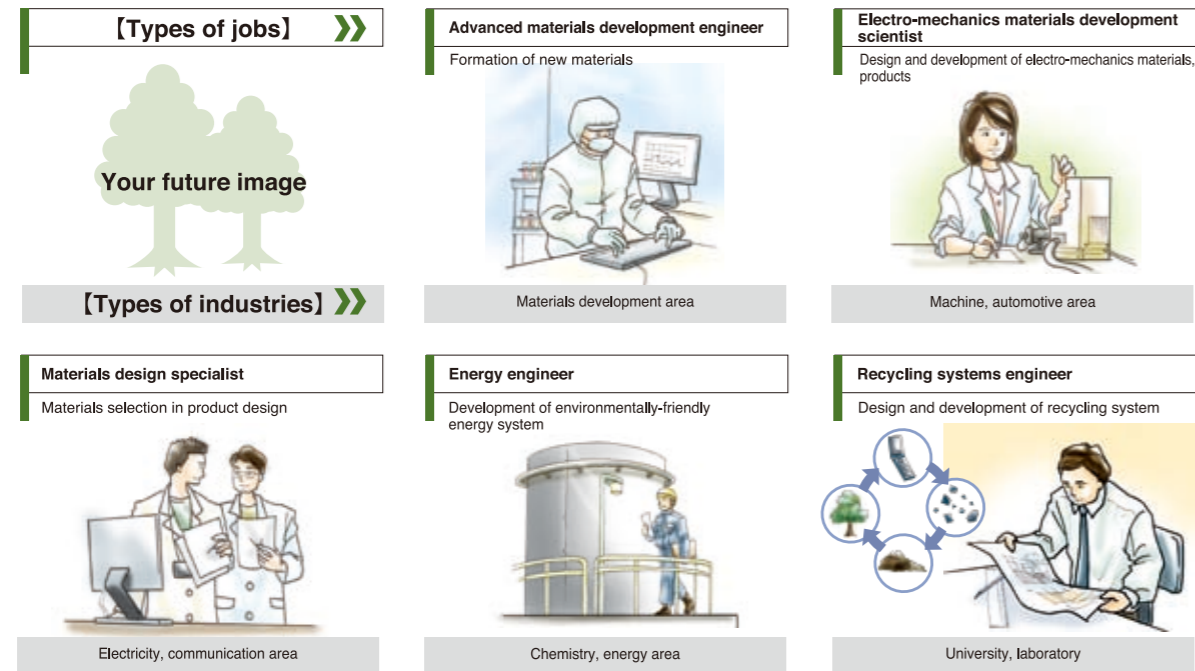
Department of Environmental and Materials Engineering

[Home page URL] <http://www.emat.nitech.ac.jp/>

The Department aims to bring up engineers who will discover new environmentally-friendly materials

The Department's feature is to discover new environmentally-friendly materials (e.g. metals and ceramics) under consideration of the various environmental issues, ranging from mass production techniques to recycling.

Industrial applications of materials science include the various industrial fields, such as electronics, automobiles, and medical industries. Students are expected to incorporate elements of applied physics and chemistry.



Advantages of Getting Your Study in the Department of Environment and Materials engineering

There is no possibility to discover new high-performance materials without nanolevel technology. Elements of physics and chemistry play a key role in pursuing nanotechnology. By incorporating the concepts rooted in the physics and science, the Department consists of two essential programs to discover environmentally-friendly new materials.

The Department of Environmental Materials Engineering offers the following programs.

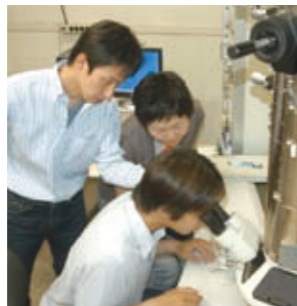
Ceramics Program

Program revolving around ceramic science offers studying structural and functional characteristic of materials.

Electro information

Clean energy

Bioengineering



Material Function Program

From the viewpoint of material science, this program offers opportunity to study development methods of environmentally-friendly materials.

Eco-materials

Energy conversion

Nanotechnology



Department of Mechanical Engineering

[Home page URL] <http://www.mech.nitech.ac.jp/>

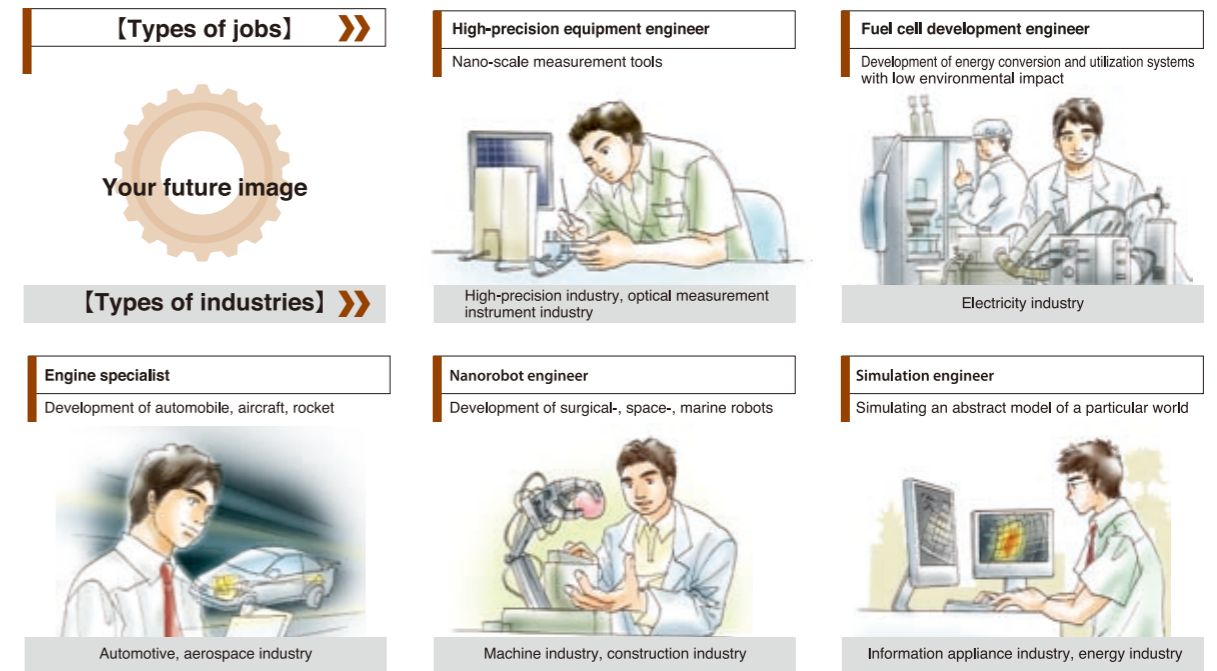
The Department aims to bring up engineers who will seek advanced technologies, by breaking through existing technologies.

Mechanical System and Energy System

Students are expected to learn proper understanding and utilization of machine dynamics to develop machines/systems which are easy and safe to use. Nowadays electronics equipment control system is common. Some examples of the main concerns include development of mechanical machinery like transporting machinery (e.g., cars), precision machines, robots, and effective use of natural power generation (e.g., engine and thermal energy). Recently, academic approaches to biomechanics and medical engineering are characterized.

Applied Physics

The program emphasizes the study of advanced measurement tools with appropriate precision and accuracy, which is vital to manufacturing equipment and machinery. New science emerges as measurement science is advanced. This program deals with the sensing technology which expands man's perceptions far beyond the limits of human five senses. Also, computer simulation technology is treated.



Advantages of Getting Your Study in the Department of Mechanical Engineering

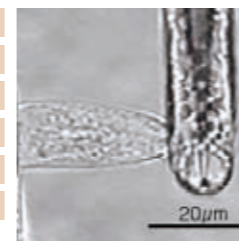
The Department seeks knowledge and gain skills to develop, design, and produce advanced environmentally-friendly machines or systems. The Department offers three educational programs: study of advanced measurement tools with appropriate precision and accuracy, study of machine technologies, and study of clean energy production technologies.

The Department of Mechanical Engineering offers the following programs.

Mechanical System Program

Students are expected to gain knowledge and skills of machine dynamics, energy, and the development of practical solutions to machinery.

Mechanics of materials
Machine dynamics
Production engineering
Control engineering
Medical engineering
Biomechanics



Energy System Program

Students are expected to gain knowledge and skills of the noteworthy thermal and fluid technologies and development of environmentally-friendly energy systems.

Thermodynamics
Fluid dynamics
Heat transfer
Environmental energy engineering
Engine engineering



Applied Physics Program

Students are expected to gain knowledge and skills of advanced measurement data processing and simulation.

Optical measurement
Plasma discharge
Superconductivity
Computational science

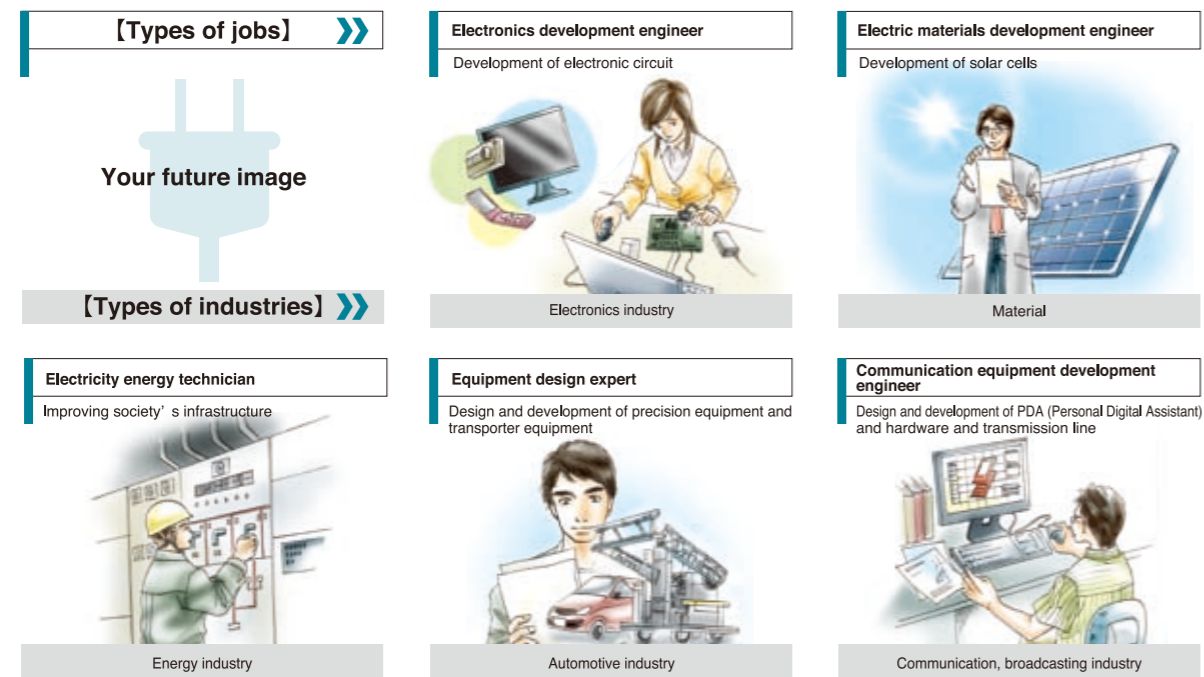


Department of Electrical and Electronic Engineering

【Home page URL】 <http://ee.web.nitech.ac.jp/>

Cellular phones, Solar Cells, Eco CARs — All are electronic products.

The word of "electricity" has two meanings, including electricity as energy source and electricity as communication device. The Department is dedicated to studies of advanced technologies in these two fields. The Department deals with development of new products, including CPU of computer system, solar cell, liquid crystal, small precision motor and optical communication. Students are expected to learn information technologies such as hardware; these technologies have contributed to better life in Japan.



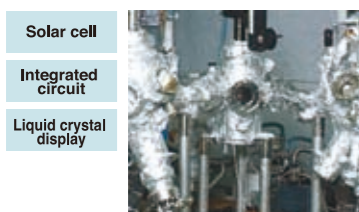
Advantages of Getting Your Study in the Department of Electrical and Electronic Engineering

The Department provides students with unique curriculum necessary for an electrical and electronics engineer to meet the future challenges of a professional career. The graduates waive the first exam to be certified as a professional engineer (14% exam passing rate for the first exam) in that the Japan Accreditation Board for Engineering Education (JABEE) accredits the programs offered for students. The Department will make efforts to continue reaching the levels expected by society.

The Department of Electrical and Electronic Engineering offers the following programs.

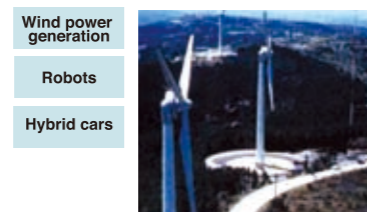
Electronics Program

Students are expected to gain knowledge and skills to build environmentally-friendly electronic society.



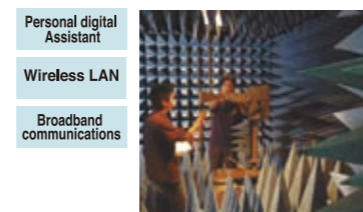
Energy Design Program

Students are expected to gain knowledge and overall development of environmentally-friendly energy design, ranging from electricity energy generation to its practical use.



Communications Program

The curriculum provides students with fundamental theory of wired and wireless communication; in addition, the program is concerned with the analysis and design of modern communications systems.

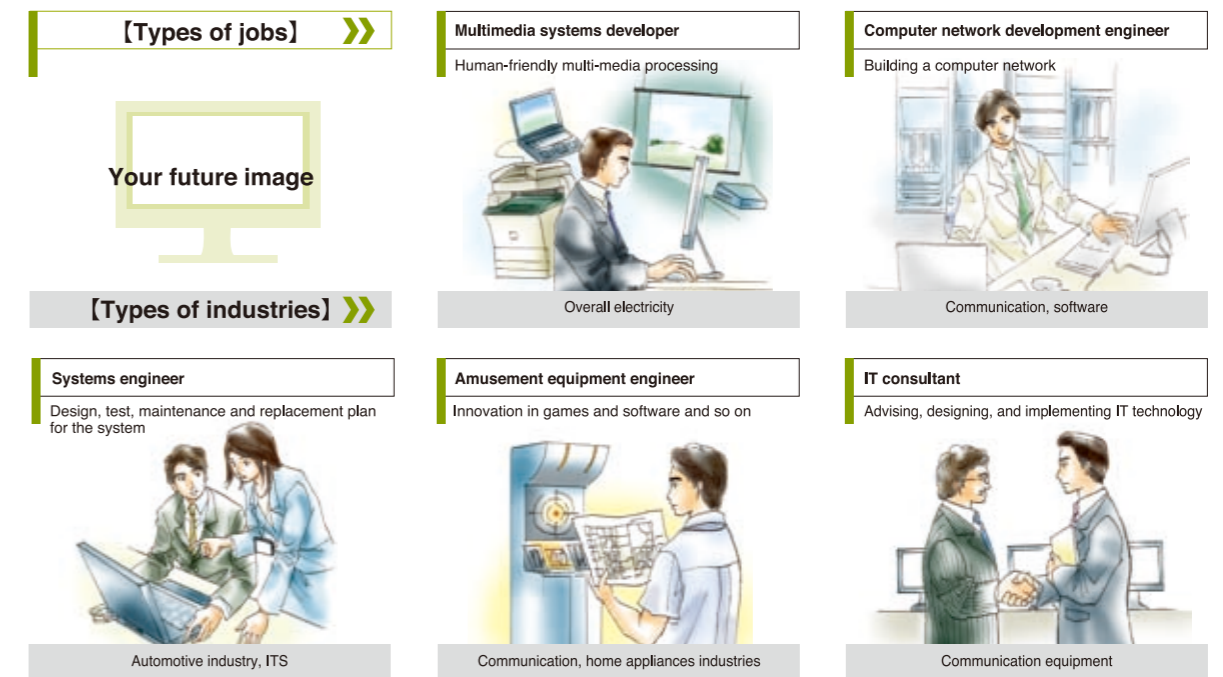


Department of Computer Science

【Home page URL】 <http://www.cs.nitech.ac.jp/>

The Department aims to bring up the 21st century engineer who will contribute to rapidly changing IT world.

The Department's feature is to study IT technologies to build the future advanced communication society. Students are expected to seek knowledge and gain skills to built futures' computer network, to invent intelligent computing system like a humanoid robot and to build multimedia system and virtual reality.



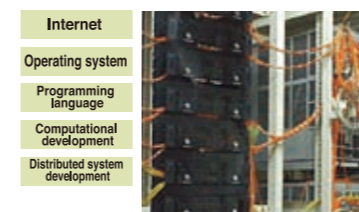
Advantages of Getting Your Study in the Department of Computer Science

Besides infrastructure technologies, the applied communication technology is vital to experts who will challenge advanced global communications. The Department offers a wide and attractive curriculum of computer science and information technologies which is essential for experts who will contribute to information-oriented society.

The Department of Computer Science offers the following programs.

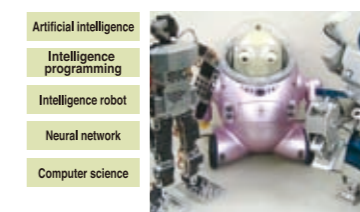
Computer Network Program

Students are expected to gain knowledge and skills to build the advanced communication society.



Artificial Intelligence Program

Students are expected to gain knowledge and skills to invent intelligent computing system like a humanoid robot.



Multimedia and HCI Program

Students are expected to gain knowledge and skills to build comfortable, amusing multimedia system.



Department of Architecture and Design

[Home page URL] <http://archi2.ace.nitech.ac.jp/>


The Department aims to bring up architects and designers who will be equipped with engineering of an art mind.

The Department's feature is to design, covering not only urban design and architecture but also a wide range of products that facilitate and enhance our comfortable daily life. In terms of architecture engineering, students are expected to study overall aspects, including building structure, building technology, building works, indoor space, and history and theory of architecture.


From the design perspective, study of how to introduce new creative design to regional & global world is one of major emphasis.

[Types of jobs] >>

Your future image




Architect
Planning and design of buildings



Architect's office


Building technician
Building work



Architect Industry


[Types of industries] >>

Metropolitan environment designer
Plan and design of metropolitan area




Housing corporations and real estate

Industry-Multimedia designer
Production of automobile, home appliance, furniture, and film



Materials, manufacturing industry

Technology development researcher
Development, research of building materials



Federal, local governments

Advantages of Getting Your Study in the Department of Architecture and Design

For over one hundred years since 1905 when the Department was established, we have produced many prominent architects and engineers. Through a new program "Design" implemented in 2004 along with the first Architecture Program, students are expected to learn knowledge and skills of architecture, urban design daily goods which are both functional and beautiful.

The Department of Architecture and Design offers the following programs.

Architecture Program

Students are expected to gain knowledge of artistic/cultural background and seek engineering technologies.

- Architect design
- Building materials
- Environment and preservation



Design Program

Students are expected to gain overall design skills and the creativity thinking required in field of product and industrial design to make more beautiful life.

- Craft design
- Product design
- Design management



Photo Courtesy: Toyota Automobiles, NIT professor Kimura, Design

Department of Civil Engineering and Systems Management

[Home page URL] <http://www.cm.nitech.ac.jp/>

The Department aims to bring up engineers who will produce and manage various systems to maintain our society.

Civil and Environmental Engineering


The Department's focus is on research and educational activities related to the construction and management of infrastructure, such as highways, bridges, and water systems. Also, the approach to maintenance of naturally built environment, including rivers and areas is emphasized. From the safety point of view, study of technologies in mitigation of floods and earthquakes is strong consideration. In terms of public relations agency jobs, engineers take place in the public sector from municipal through to federal levels.

Systems Management and Engineering


The program embodies disciplines of management, sociology, psychology and engineering systems modeling to study solution methods for such models. Also, students are expected to understand technologies of improvement in productivity and quality control. In addition, approaches to problem-solving methods in areas of management, health care, communications, disasters, and organizations are taught. Studies of technologies to invent more human-friendly goods and systems and comfortable work environments are offered.

[Types of jobs] >>

Your future image




Industrial systems designer
Production, distribution Management



Automotive industry


Mission specialist, enterprise planner
Management planning



Communication, home appliance industry


[Types of industries] >>

Project management engineer
Planning, performing, controlling government and industry project




Lifeline industry

Lifeline design specialist
Design of public traffic system



Construction industry

Environmental engineer
Creation of metropolitan amenity space



Federal and local government

Advantages of Getting Your Study in the Department of Civil Engineering and Systems Management

Evolving technologies has produced new products and services. In 21st century technology evolution is tasked with additional responsibility, including emphasis on qualities of human-environment relationships to bring new values into society. From this viewpoint, the Department offers new programs which transcend the limits of literature and science fields to educate engineers who build comfortable systems.

The Department of Civil Engineering and Systems Management offers the following programs.

Civil and Environmental Engineering Program

Students are expected to gain technologies to build safe, comfortable cities and societies.

- Urban Disaster Prevention
- Lifeline
- Amenity



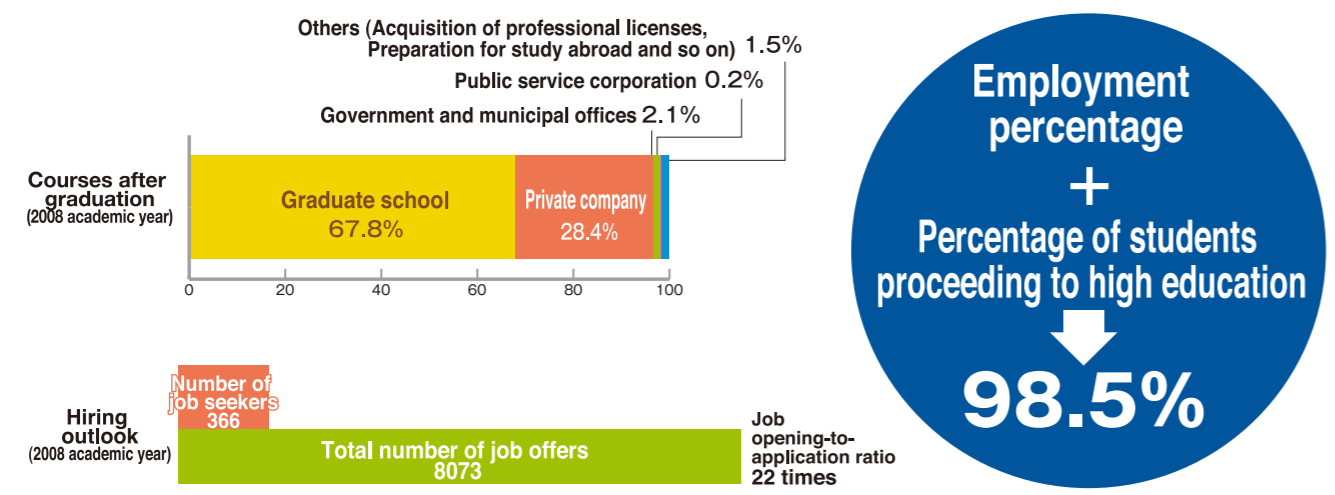
Systems Management and Engineering Program

Students are expected to gain technologies to cope with rapidly changing industries and social systems.

- Project
- Business process
- Management



Courses after Undergraduate Degree Completion



Finding employment

What kind of job do you expect after graduation?

Occupational category

- | | | |
|----------------------------------------------------------|----------------------------------------------|----------------------------------------|
| Bio-materials, pharmaceutical drugs development engineer | Engine specialist | IT consultant |
| Chemical engineer | Nanorobot engineer | Architect |
| Daily life product development scientist | Simulation engineer | Building technician |
| Automotive materials development engineer | Electronics development engineer | Metropolitan environment designer |
| Process design engineer | Electric materials development engineer | Industry, footage designer |
| Advanced materials development engineer | Electricity energy technician | Technology development researcher |
| Electro-mechanics materials development scientist | Equipment design expert | Industrial systems design |
| Materials design specialist | Communication equipment development engineer | Mission specialist, enterprise planner |
| Energy engineer | Multimedia systems developer | Project management engineer |
| Recycling systems engineer | Computer network development engineer | Lifeline design specialist |
| High-precision equipment engineer | Systems engineer | Environmental engineer |
| Fuel cell development engineer | Amusement equipment engineer | |



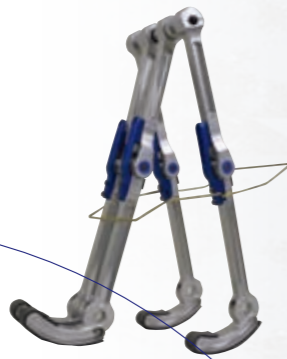
Department of Materials Science and Engineering

To seek the development of novel materials leads you to tomorrow's science and technology.

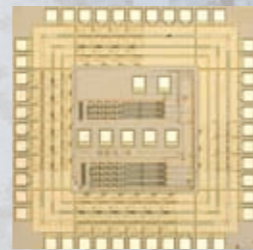
The Department of Materials Science and Engineering has been a leader in advanced educational researches in materials science. To emphasize on contributions to new knowledge from diversity of teaching and research resources, the Department offers the high quality of a broad variety of courses and research. From the broad scope, covering substance, materials, life, process, and environment fields, the students of the Department learn the essences of materials and their diverse applications to take active roles in various industrial fields.

Department of Engineering Physics, Electronics and Mechanics

Field of
Mechanics



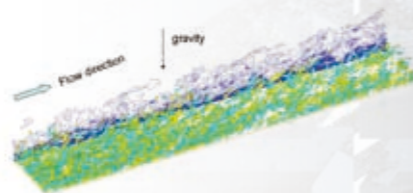
Field of
Electronics



Field of
Fine
Measurements



Field of
Energy



Through a rationalized approach to manufacturing, engineers create prosperous society.

One of the most significant expectations of the Department of Engineering Physics, Electronics and Mechanics results in a contribution to a better quality of life. To stress on the full realization of the expectations, the Department offers the high quality of a broad variety of courses and research. Students in the Department learn a broad area of basic and applied physics, and its application to the most advanced mechanical or electronic engineering. The Department brings up engineers with a wide range of creative ideas who will be able to develop advanced technologies through rational and harmonized methods.

Department of Computer Science and Engineering

Field of
Mathematics and
Mathematical
Science

Field of
Computational
Intelligence



Field of
Computing and
Communications



Field of
Systems and
Control



Field of
Multimedia and
Human Computer
Interaction

The development of intelligence for a new century enables human being to evolve.

A major mission of the Department is a contribution to growth and social harmony in the social environment. To signify the full realization of the mission, the Department offers the high quality of a broad varied of courses and researches. Students learn advanced knowledge and techniques from a wide range of fields, such as mathematics and mathematical science, computational intelligence, computing and communications, systems and control, and multimedia and human computer interaction. The Department brings up engineers who will contribute to a better life, by developing structured communication among a social network.

Department of Architecture, Civil Engineering and Industrial Management Engineering

Field of
Human Space



The creation of a new social environment where it is possible for men to coexist with nature in harmony

From an engineering and management perspective, students in this department learn a wide range of fields including policy making, planning, structural design, evaluation, infrastructure maintenance, and environmental engineering. In addition, the Department's education puts emphasis on the relevance of science and technology to architecture, design, urban planning, country formation, environment, disaster prevention, management engineering, system management, and so on to bring up engineers who will contribute to the creation of a better social context characterized by men's coexistence with nature in harmony.

Field of
Civil
Engineering



Field of
Environmental
Engineering and
Disaster
Prevention



Field of
Management
Engineering



Department of Techno-Business Administration

Field of
Technology and
Industry
Management

A student's goal is to become a leader equipped with technology, farsighted management skills, and leading-edge knowledge.

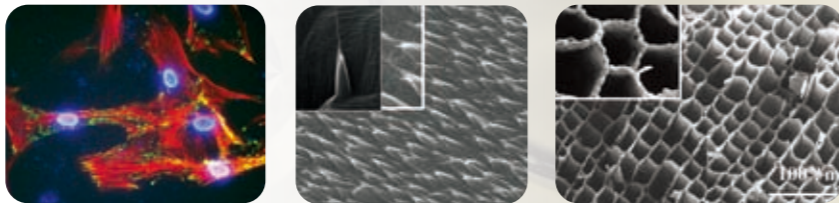
The outstanding educational mission of the Department emphasizes on the study of relationship between technical impact and the creation of market value as well as educational researches to educate specialists equipped with knowledge entrepreneurship, including regional entrepreneurs' planning and leaders who will contribute to the ongoing evolution of industries. The course has the two programs, which one of them is for working students to improve the abilities of management and innovation; they can obtain the master degree in one year. The other is for students to become entrepreneurs, consultants, engineering coordinator, and intellectual property specialist.

Field of
Core
Technologies



Department of Frontier Materials

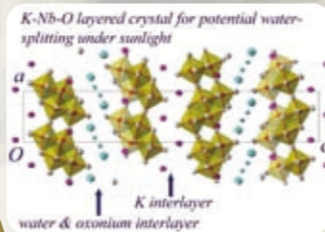
Field of Environmental Ceramic Materials



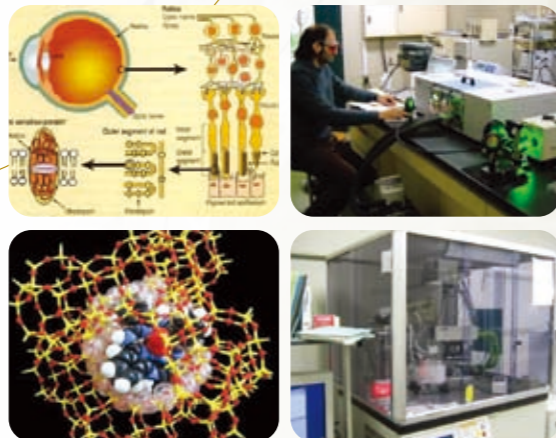
The development of environmentally-friendly materials leads to frontier materials technology.

The Department revolves around the principles of nanoscale, and three fields in the Department are inaugurated by focusing on the development of environmentally-friendly, high-performance frontier materials in the wide range of chemical and physical fields. The Department consists of three specialized fields: Environmental Ceramic Materials, Advanced Energy Materials, and Molecular Life Science and Nanotechnology, covering basic and applied areas in order to bring up engineers equipped with advanced knowledge and skills who will serve as a leader in/outside of Japan.

Field of Advanced Energy Materials



Field of Molecular Life Science and Nanotechnology



Department of Scientific and Engineering Simulation

Field of Computational Applied Sciences

Computer network system allows us to solve difficult engineering problems.

The mission of the Department is to bring up engineers who will contribute to the development industry expansion by using high performance computers. Students study challenging fundamental problems in science and engineering by high performance computers, to develop consolidated system embodying physical and semantic contents of information, to apply to more complex engineering and environmental problems, and also to develop highly advanced software technology. The Department consists of the following three Fields: Field of computational Applied Science, Field of Computer Science and System Engineering, and Field of Simulation in Civil Engineering and Architectural Systems to acquire problem solving skills from different perspectives

Field of Computer Science and System Engineering

Field of Simulation in Civil Engineering and Architectural Systems

Campus Information



International Center (Building No. 21)

The center revolves around its mission to bring up talented students who will be able to contribute to an international society. We immerse students in a wide range of activities and programs such as Japanese language courses and educational field trips. In addition, the center emphasis on exchange programs. As part of overall mission, we have invested in the formation of NIT alumni networks.



International House

This features international students housing. New students may move into this dormitory in April/ October, depending on a new period of a new student's life with classes at NIT. The lease period is six (6) months.

Single room monthly rent 5,900 YEN



University Hall

The Dining rooms, the campus stores, the campus coffee store, the barbershop are located within the university hall. In addition, halal foods are served under Islamic dietary guidelines.



Health Support (H.S.) Center

The H.S.center provides services to help you meet your health and wellness needs. Please drop by the center when you need urgent care, or just look for general health information.



Dept. of Student Affairs (Building No. 19)

International Student Affairs Office

The services offered for international students are shown below;

- **Certificate Issues**
Japanese government scholarship and student certification
An enrollment certification (such as a research student and so on)
- **Procedures**
Notice of temporary leave from Japan
Application for the international house
Application for comprehensive lodging insurance for international students
- **Supports**
Scholarships
Supports for incoming students
- **Information**
Upcoming events and activities



Others Services Available

Consultation services
Tutorial services



Campus Map

The number from 1 to 54 shows the number of building.


Number of International Students

Messages from Seniors

Countries& Regions

Classification Countries & Regions	Graduate School				Undergraduate		Research Students		Total		
	Master's Courses		Doctor's Courses		Govt. Supported	Self Supported	Govt. Supported	Self Supported	Govt. Supported	Self Supported	Total
	Govt. Supported	Self Supported	Govt. Supported	Self Supported							
China	15	65	10	30		35		67	25	197	222
Korea		4	1	4	11	9		1	12	18	30
China(Taiwan)		1				1		1		3	3
Singapore	1								1		1
Philippines	2	1	1						3	1	4
Viet Nam	4	6	1	1		20		4	5	31	36
Malaysia		1	1	6	1	20			2	27	29
Indonesia	3	1		2	1			1	4	4	8
Myanmar	2			2					2	2	4
Thailand	1			1				1	1	2	3
India	3		5	5	1			1	9	6	15
Nepal				1				1		2	2
Srilanka					1				1		1
Afghanistan	4		2						6		6
Saudi Arabia		1								1	1
Iraq							1		1		1
Turkey		2						1		3	3
Syria	1				1				2		2
Pakistan	1								1		1
Egypt				4						4	4
Algeria				1						1	1
Morocco			1						1		1
Moldova							1		1		1
Kenya	1								1		1
Ethiopia	1								1		1
Tunijia	1			1					1	1	2
Bangladesh		1	1	3					1	4	5
Finland								1		1	1
France				1				4		5	5
Spain			1					1	1	1	2
Bulgaria					1				1		1
Slovakia					1				1		1
Turkmenistan							1		1		1
Brazil					1		2	1	3	1	4
Costa Rica			1						1		1
Colombia	1								1		1
Total	41	83	25	62	19	85	5	85	90	315	405
	124		87		104		90		405		

Note:Govt. Supported ; Japanese Government Scholarship Students Self Supported ; Foreign Government Sponsored Students and Privately Financed Students (As of May 1, 2010)

Life and Materials Engineering
Biological Chemistry Program 4th year
SUNU HADI
Nationality Indonesia

In my idea, chemistry is the most influential for human beings because chemistry innovations have contributed to our daily life. For example, the use of fertilizer is great innovation, which has prevented us from facing food shortages. And as a result, our life is well-off. And advanced chemical technologies will contribute to our society.

My strong interest motivated me to study in the Department of Life and Materials. The Department deals with materials from viewpoints of chemistry and biochemistry. Also, I have gained knowledge and skills to formulate new substance.

I live a full college life, by studying, participating in badminton club, and getting a part-time job. The college life is the first step to become a person equipped with a well-developed awareness of today's global community. I recommend younger students to enjoy challenges and absorb valuable idea, and so on.



Electrical and Electronic Engineering
Energy Design Program 4th year
廖立翔 (LIAO LIXANG)
Nationality China

I major in the Department of Electrical and Electronic Engineering which deals with three domain fields: electricity, electron and communication electronics. In the first year a strong foundation in mathematics and physics is provided. Students in their second year, not their third year, start to specialize in their respective program, by selecting one of the three programs, which encouraged me to grow. This is a very attractive system.

The total number of international students at NIT rises to more than 400 and I am one of them. Japanese tutorial services to help international students are available. Also, faculty members' kind helping hand reaches out when these students face problems on academic as well as the college life. Additionally, participating on student club activities, along with getting a part-time job contributes to a joyful college life experience. Parties and educational field trips are regularly offered; Japanese students too join these activities. Through these activities, new friends are found. Please pay close attentions to the bulletin board to gather fun information.



Civil Engineering and Systems Management
Civil and Environmental Engineering Program 4th year
UNG SEIHA
Nationality Cambodia

Hello I am UNG SHIHA from Cambodia. After graduation from the Nagano College of Technology, I transferred to the third year of NIT because of transfer credits recognized by NIT. I majored in the Department of Civil Engineering and Systems Management. In the third and the fourth years I studied structural mechanics, geotechnical engineering, hydraulics, urban planning, concrete engineering, and so on. In the fourth year a research project started. I am the only international students. I have to write my research paper in Japanese. Whenever I face study problems as well as problems related to college life, faculty members and staff at the International Center kindly help me out.

Besides the study, participating in student club activities is a joyful experience. Please study hard and at the same time take care of your health.



Environmental and Materials Engineering
Materials Function Program 3rd year
NGO VAN THI
Nationality Viet Nam

My strong interest lies in new material in Japan and I have been enrolled in the Department of Environmental and Material Engineering. My career goal is to become an engineer who will discover environmentally-friendly materials. The language used in classed is Japanese. The language barrier sometimes enables me to understand lectures. If so, faculty members kindly give me a helping hand. Additionally, a helping hand by many friends in the same or different departments, reaches out when I face problems on study as well as the college life.

I'd like to say to privately-founded international students. You don't have to worry about financial issues because many part-time job opportunities in Nagoya and scholarship options are available. Also, various student clubs are open to you. Your joyful college life here would be promised.



Computer Science
Program is not decided 1st year
MAKOVNIKOVA JANA
Nationality Slovakia

I have been interested in using software, which motivated me to get into communication engineering courses. Japanese technologies have been highly evaluated and I have been drawn to the Japanese cultures. These factors encourage me to challenge the Japanese Government Scholarship Program. I surprisingly won that.

For the first year after my arrival in Japan I learned Japanese and still wondered if I could truly attend a Japanese college. My fears vanished. I became a NIT student according to the Japanese government direction. My college life started in here. Some worried nagged me when considering the language barrier and a new town. However, thanks to staff at International Center and female classmates I began to make adjustment to a new environment. Besides, I can almost catch up to lectures by Japanese. Faculty members kindly explained what I missed. Now, I belong to the Japanese archery club and I got many friends, as a result, my language skills have been improving. Not to mention, my understanding of Japanese cultures is expanded.

Compared with other universities, NIT is a smaller university, which does create many advantages. For example, high-level of coherence among students, faculty members and staff is featured. Now, I am so happy about the Japanese government arrangement to select NIT as my university to study.



Mechanical Engineering
Energy System Program 3rd year
劉治翔 (LIU ZHIXIANG)
Nationality China

I major in the Department of Mechanical Engineering. In the first year, the general education courses are taken. In the second year, students are requested to choose one of three programs. I have been drawn to aerospace area, which motivated me to study energy program.

NIT students are very quite in classes, which enables me to concentrate in college lectures. In addition, senior students kindly give me job tips, test-taking tips and so on. Privately-founded international students are likely to face financial worries, which force them to get a part-time job. However, tuition exemption program, and scholarship opportunities are available. These attractive programs would enable you to allocate more time for your study, by reducing working hours. Activity at student clubs would get you a valuable social education.



Architecture and Design
Architecture Program 3rd year
白承志 (BAEK SEUNG-JI)
Nationality Korea

When considering the elaborate beauty of architecture, a unique quality of the cultures related to its history is found. The architecture sometimes refers to the activities of designing, but a wide range of fields are covered, including materials, structure, environment, and building equipment. After graduation various job opportunities will wait for me. From the design perspective I transform my ideas into building. This case applies to design program too. Guest speakers in the architecture fields are invited to our classes, which greatly benefits us.

There is International Center and there Japanese language courses and supports for a better college life are available, through which international students can make adjustments to a new college life. In addition, many activities are scheduled to expose these students to Japanese cultures and traditions.

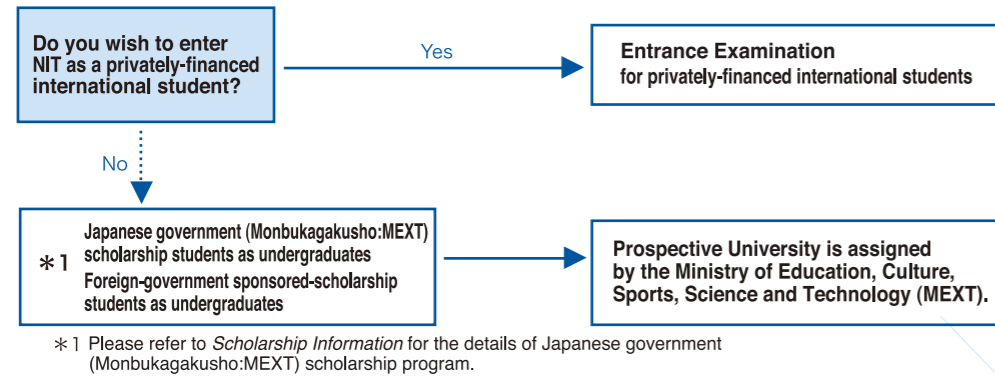


Entrance Examinations

Information about NIT entrance examinations for international students is shown below.

Please, visit Nagoya Institute of Technology (NIT) homepage (<http://www.nitech.ac.jp>) to gather the necessary information

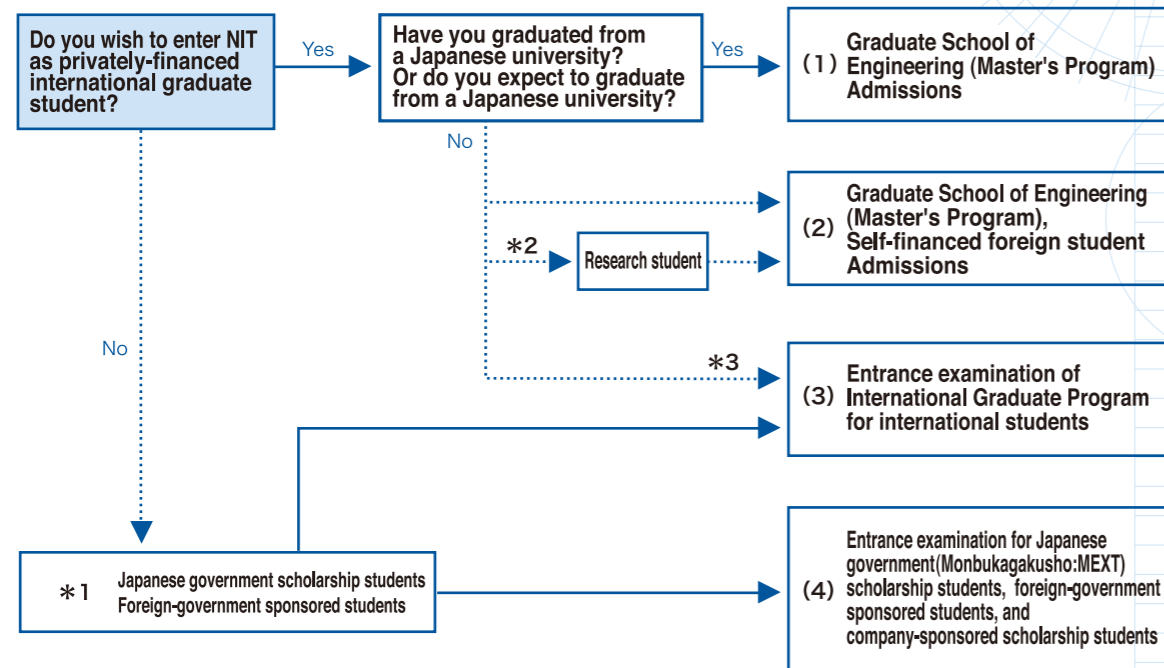
Entrance Examination for Admission to Bachelor's Degree Program



Entrance Examination for Admission to Master's Degree Program

1. Regular entrance examination
2. Entrance examination for privately-financed international students **a**
3. Entrance examination of International Graduate Program for international students **b**
4. Entrance examination for Japanese government(Monbukagakusho:MEXT) scholarship students, foreign-government sponsored students, and company-sponsored scholarship students **c**

- a** Persons have graduated or scheduled to graduate from Japanese universities are excluded.
b Entrance Examination of October enrollment for International Graduate Program
c Persons are confirmed or scheduled to be MEXT scholarship students, Foreign government sponsored-scholarship students, and Company sponsored- scholarship students at the time of Admission



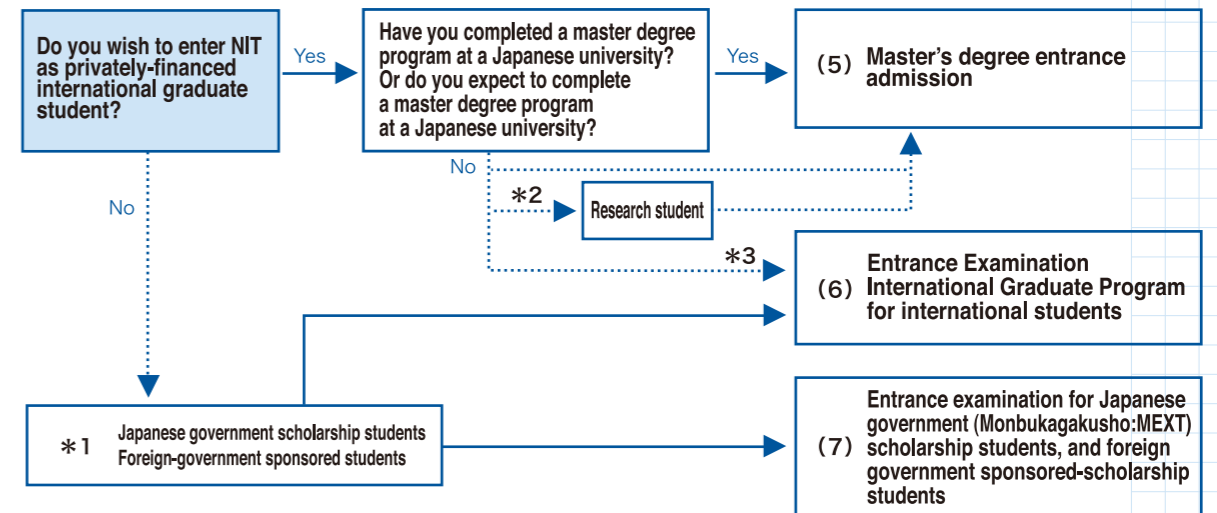
- *1 Please refer to *Scholarship Information* for the details of Japanese government (Monbukagakusho:MEXT) scholarship program.
 *2 Persons wish to enroll as research students should contact to prospective NIT supervisors and have their approvals in advance.
 *3 Entrance Examinations (4 majors) of October enrollment for International Graduate Program; Department of Materials Science and Engineering, Department of Architecture, Civil Engineering and Industrial Management Engineering, Department of Frontier Materials, and Department of Scientific and Engineering Simulation.



Entrance Examination for Admission to Doctoral Degree Program

5. Regular entrance examination
6. Entrance Examination International Graduate Program for international students **b**
7. Entrance examination for Japanese government (Monbukagakusho:MEXT) scholarship students, **a** and foreign government sponsored-scholarship students

- b** Entrance Examination of October enrollment for International Graduate Program.
a Persons are confirmed or scheduled to be the MEXT scholarship students, Foreign government sponsored-scholarship students, and Company sponsored- scholarship students at the time of Admission



- *1 Please refer to *Scholarship Information* for the details of Japanese government (Monbukagakusho:MEXT)scholarship program.
 *2 Persons wish to enroll as research students should contact to prospective NIT supervisors and have their approvals in advance.
 *3 Entrance Examinations (4 majors) of October enrollment for International Graduate Program; Department of Materials Science and Engineering, Department of Architecture, Civil Engineering and Industrial Management Engineering, Department of Frontier Materials, and Department of Scientific and Engineering Simulation.

Scholarship Information

Japanese Government(Monbukagakusho:MEXT) Scholarship

Those who are seeking Japanese government scholarship shall meet one of the three criteria below.

1. Embassy recommendation
 Japanese diplomatic missions abroad seek for soliciting candidates, and conduct the preliminary screening by the MEXT. Successful candidates of the preliminary screening are required to contact directly to NIT for obtaining admissions. The final selection will be conducted by the MEXT based upon the result of the preliminary selection for nominating grantees.
2. University recommendation
 Candidates with academic excellence must be NIT prospective students under the academic exchange agreements, and require scholarship for financial necessity. The selection will be conducted by the MEXT to nominate as grantees.
3. Domestic Selection
 There are two categories in Domestic Selection. One is for Privately-financed International students currently enrolled in undergraduate program and expected to be in the final year for the forthcoming year. The other is Privately-financed International students currently enrolled in undergraduate program or studying as research students and expected to be enrolled in postgraduate studies for the forthcoming year. NIT will recommend the students with outstanding academic excellence in both categories as MEXT candidates. The MEXT selection will be conducted and nominated as successful grantees.

Scholarship for Privately-financed International Students

1. Japanese Student Services Organization (JASSO) Honors Scholarship for Privately Financed International Students
 Candidates of Privately financed international undergraduate/graduate/research students with outstanding academic excellence and financial necessity will be selected as NIT recommended candidates to the JASSO. The JASSO will conduct the final selection of Grantees. A monthly stipend for undergraduate level is 45,000 JPY, and postgraduate level is 65,000 JPY(the year 2009) per academic year.
2. Other scholarship
 Scholarships offered from local sponsors: companies, institutions, and foundations. (Over 30 scholarships have been offered in the year 2009) Scholarships are awarded on various criteria reflecting the purposes of the founder of the awards. Candidates are initially selected at NIT and recommended to the organized parties.

Exemptions System

Due to the financial necessity, applicants might receive exemptions from paying Admission and Tuition fees based upon the screening result.

About Nagoya, Japan

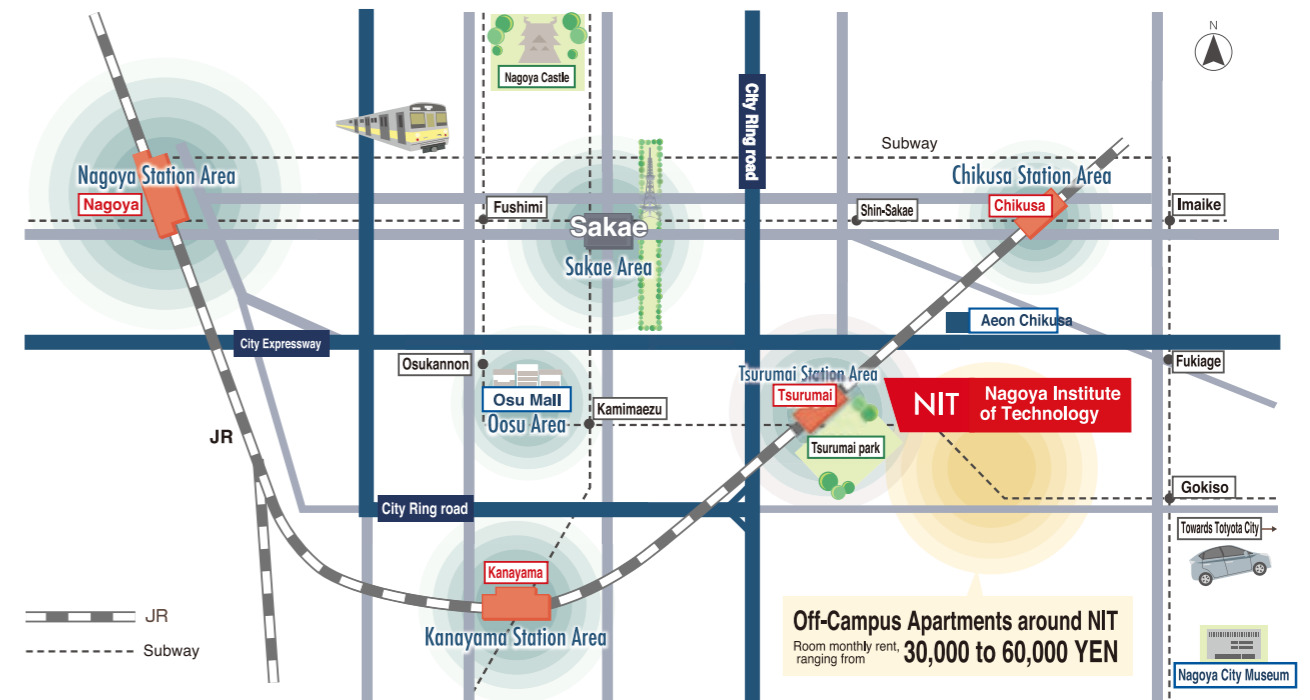
「Nagoya?」

Nagoya is located at the center of the mainland of Japan. Nagoya, which is the third largest city, after Tokyo and Osaka, functions as a transportation hub because of Chubu Centrair International Airport and Nagoya station where you can catch the bullet train. Nagoya is fortunate to be in the prosperous Chukyo industrial areas which predominantly consist of the manufactures of aerospace, transport vehicle, machinery, household electric appliances parts and advanced materials.



Surrounding Area of Nagoya Institute of Technology

● Getting to NIT ●



Nagoya Institute of Technology (NIT) is located at the center of Nagoya city. And transportation is very convenient. Its nearest train station is called "Tsurumai", to which it is only a 7-minute train ride on Chuo Line from Nagoya station. And another 7 minutes walk leads you to NIT. In addition, you can quite easily reach the main shopping area of Sakae, and old-style electric appliance trader shopping area of Osu. Apartments for reasonable price, ranging from 30,000 to 60,000 YEN for a monthly rent, are offered. When taking time to look for an apartment, you might/ would find an apartment with a good deal for rent price. Trees in Tsurumai Park give you a comfortable view. Both Nagoya University Hospital and a largest supermarket "AEON Market" are within walking distance of NIT.



● Area Attractions near NIT ●



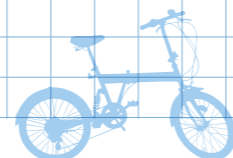
Tsurumai Park

This park was constructed as the first public park in 1909. One of outstanding features is a garden of mixed Japanese and Western styles. Also, it is noted for its cherry blossoms in spring. Nagoya City Hall is located in it, where, every year, entrance ceremony and commencement ceremony at NIT are held.



AEON Chikusa

Largest 24 hour supermarket



Oosu
Oosu is a major shopping area for electric appliances, along with Akihabara in Tokyo, Nihonbashi in Osaka. Its town name came from Oosu Kannon (a Buddhist temple). Surprisingly, the building named after "Ameyoko" is found. If three towns in Tokyo (Akihabara, Ueno and Asakusa) came together, they would generate an atmosphere of Oosu.



Sakae

Sakae is center of Nagoya's commerce. Nagoya TV Tower and Oasis 21 are often mentioned as a symbol of Sakae. And other famous Sakae landmarks are: (1) the department stores Mitsukoshi, Maruei and Matsuzakaya (2) Aichi Art Center and (3) Art and Culture Center. These facilities contribute to Sakae's energetic atmospheres around the clock.

